

# This Month's IMJ

May 2017 Volume 110, Number 5

## IMJ Commentary

### [Paediatric Workforce in the UK and the Wider Implications](#)

**JFA Murphy**  
Editor

## Editorial

### [A Practical Approach to Hypothyroidism and Pregnancy](#)

**V O'Dwyer, M Hatunic**

## Original Papers

### [Vaccine-Preventable Admissions to an Irish Paediatric Intensive Care](#)

**Y Doyle, M Healy, C McMahon, S Crowe**

Doyle et al report a series of ICU admissions for vaccine preventable infections. The toll was considerable. Among the 39 children in the study there were 5 deaths. There were 4 deaths from pneumococcal disease and 1 death from pertussis. Other complications encountered in the cohort were skin loss, digit loss, and neurological injury.

**Table 1 Summary of Patient Diagnostic Groups admitted to PICU with Vaccine-preventable Infections**

Number of Admissions with Infection	Pre-existing Medical condition	Relevant Vaccination status	Age range (months)	PICU Mean Length of stay (range)	Mortality	Morbidity
Strep. Pneumoniae (n=9)	3 of 9 admissions (prematurity, cerebral palsy, factor VII deficiency)	No vaccines	18 days-36 months	8 days (6-45 days)	2	4 of 9 admissions (cerebral haemorrhage, seizures, iliac vein thrombosis)
Varicella (n=8)	4 of 8 admissions (unrepaired congenital cardiac disease, pneumonia, autistic spectrum disorder, cerebral palsy)	No patient had received varicella immunisation	2-72 months	7 days (5-48 days)	1 – unrelated to sepsis	6 of 8 admissions (acute kidney injury, extensive skin loss, significant scarring, ischemic brain injury)
Meningococcus B (n=17)	3 of 17 admissions (SVTs, Trisomy 21 with repaired AVSD, asthma)	No patient had received meningococcal B immunisation	2-180 months	12 days (4-38 days)	0	8 of 17 admissions (digit loss, limb loss, acute kidney injury, cerebral infarction)
Haemophilus pneumoniae (n=4)	2 of 4 admissions (asthma, epilepsy)	No vaccines	16-48 months	9 days (6-19 days)	0	1 child had cardiac arrest with hypoxic changes on MRI Brain
Pertussis (n=1)	Ex-premature	No vaccines	2 weeks corrected gestational age	14 days (14 days)	1	

[\*\*An exploratory service-based study of Deliberate Self-Harm \(DSH\) in Ireland: ‘A hidden population’?\*\*](#)

**P Quinn, P Surgenor, S McGilloway**

Quinn et al describe a cohort of 832 patients with DSH. The predominant group was female, under 25 years, with a history of cutting (73%). Suicide ideation (42%) and suicide attempt (35%) were common associations.

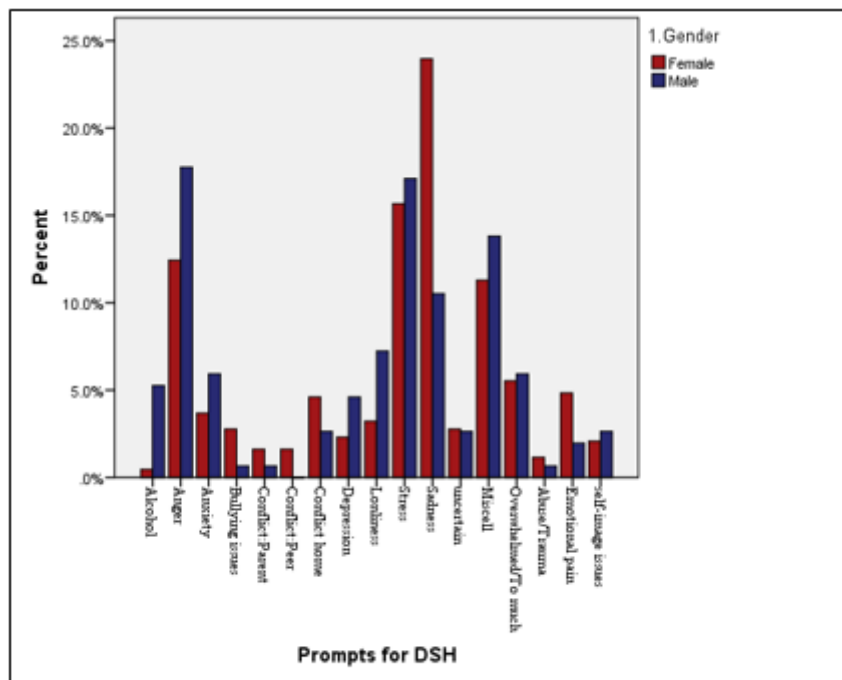


Figure 1. Prompts for DSH by gender

[Comparing cardiovascular risk factors, disease and treatment in participants with rheumatoid arthritis and without arthritis in a population based study](#)

N O’Driscoll, N Kennedy, S Anjum, A Fraser, A Hannigan

O’Driscoll et al found that in a cohort of 457 patients with rheumatoid arthritis there were higher rates of obesity, physical activity, and hypertension.

Table 1 Demographic, self-reported medical history and objectively measured BMI and waist to hip ratio of patients with no arthritis (n=4063) and with those with RA (n=457)

	No Arthritis (n = 4063)	RA (n = 457)	p-value
<b>Mean age (SD) in years</b>	61.3 (8.56)	66.3 (9.06)	<0.001
<b>Female</b>	2032 (47.1%)	253 (53.9%)	<0.001
<b>Highest level of education greater than primary school</b>	3119 (71.0%)	296 (56.1%)	<0.001
<b>No private medical insurance</b>	1394 (38.3%)	210 (50.7%)	<0.001
<b>Smoker</b>			
Never	1861 (44.8%)	190 (40.6%)	
Past	1541 (37.7%)	190 (41.6%)	<0.001
Current	661 (17.5%)	77 (17.8%)	
<b>Physical inactivity:</b>			
Haven’t walked for at least 10 minutes any day in last week	528 (13.6%)	99 (23.7%)	<0.001
<b>BMI &gt; 30kg/m<sup>2</sup></b>	1239 (31.6%)	212 (46.7%)	<0.001
<b>Waist/hip ratio</b>			
mean (SD) for men	0.96 (0.07)	0.98 (0.07)	<0.001
mean (SD) for women	0.86 (0.07)	0.87 (0.06)	<0.001
<b>Self-reported hypertension</b>	1293 (32.3%)	226 (49.9%)	<0.001
<b>Self-reported diabetes</b>	272 (6.8%)	46 (10.2%)	<0.001
<b>Self-reported high cholesterol</b>	1526 (37.3%)	220 (47.5%)	<0.001

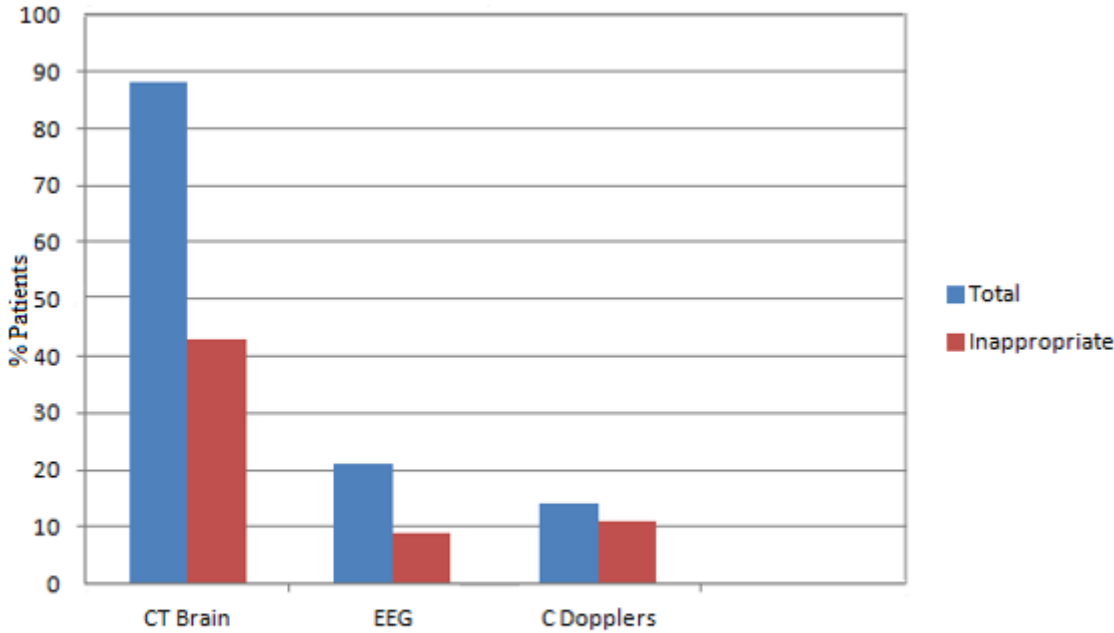
Results reported as n (weighted %) apart from age and waist/hip ratio

## Investigation and diagnostic formulation in patients admitted with transient loss of consciousness.

**R Briggs, T Coughlan, J Doherty, DR Collins, D O'Neill, SP Kennelly.**

Briggs et al examined 80 patients with transient loss of consciousness (T-LOC). 88% had a ct scan, more than half being unnecessary. Half of the EEGs and 82% of the Doppler studies were not clinically indicated. The conclusion is that many patients are subjected to unnecessary tests when they present with T-LOC.

**Table 1: Use of inappropriate investigations in patients admitted with T-LOC**



T-LOC = transient loss of consciousness

CT Brain = computerized topography brain scan

EEG = electroencephalogram

C Dopplers = carotid doppler ultrasound.

## The Hidden Burden of Outpatient Repeat PSA Testing in a Prospective Cohort

**Browne E, O'Kelly F, Landon D, Daly P, Galvin D, Hegarty N, Connolly S, O'Malley K.**

Browne et al have analysed the tests other than PSA that carried out by GPs prior to referral to the Urologist. The common additional tests were a renal profile and a Hb FBC. The authors discuss who should be responsible communicating with the patients and acting on these additional results.

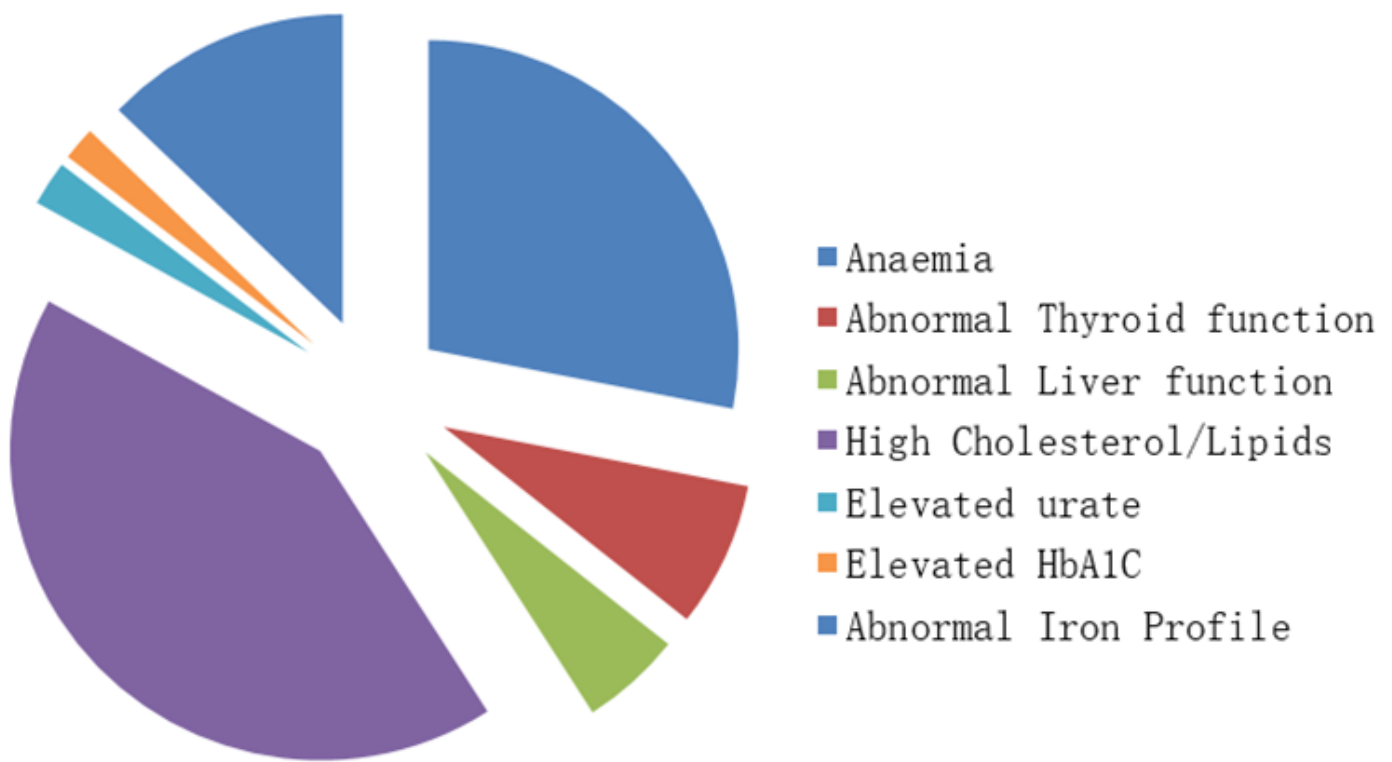


Fig 2. Abnormal tests broken down by type

[The use of cold coagulation for the treatment of cervical intraepithelial neoplasia](#)

Wyse A, Seah W A, O'Neill J, Byrne P

Wyse et al describe the use of cold coagulation in the treatment of cervical intraepithelial neoplasia. The initial findings are that cold coagulation is as effective as LLETZ.

Table 1. Outcome for women treated with Cold Coagulation compared to those treated with LLETZ.

Follow up results at 6 months	Cold Coagulation	LLETZ	Chi Square
Negative cytology	173 (86.5%)	167 (83.5%)	Chi Sq. = 0.400814 (p > 0.05)
HPV negative	148 (74%)	166 (83%)	Chi Sq. = 0.028471 (p < 0.05)
Negative cytology and HPV negative	139 (70%)	152 (76%)	Chi Sq. = 0.144326 (p > 0.05)

[Absorbable Polydioxanone \(PDS\) suture provides fewer wound complications than](#)

## [polyester \(ethibond\) suture in acute Tendo-Achilles rupture repair.](#)

**M N Baig, J G Galbraith, I Yousaf, Robert Din.**

Baig et al describe the treatment of 53 patients with ruptured tendo Achilles. The authors compared the use of Polydioxanone and Polyester sutures. Those treated with Polydioxanone fared better with lower infection rates and a superior Boyden score.

Table 2 - Descriptive characteristics

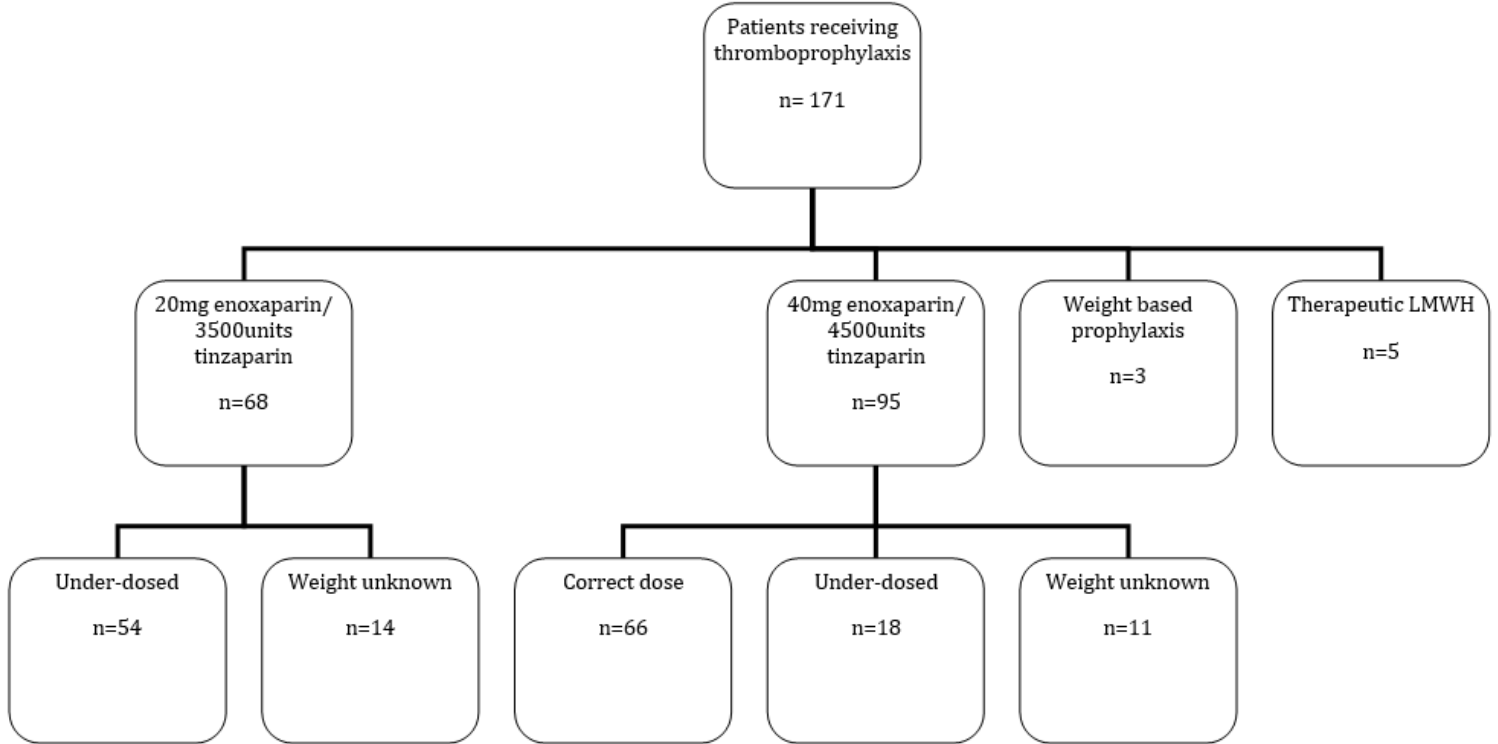
	<b>Suture-1 (Polydioxanone)</b>	<b>Suture-2 (Polyester)</b>	<b>P -value</b>
<b>Age (years)</b>	45	42.7	0.43
<b>Complications - %</b>			<b>0.001</b>
<b>None</b>	97%	68%	
<b>Wound Infection</b>	0%	31.5%	
<b>Superficial Infection</b>	0%	10.5%	
<b>Deep Infection</b>	0%	21%	
<b>Deep Venous Thrombosis</b>	3%	0%	
<b>Sports Injury - %</b>	59%	63%	0.75
<b>Boyden Score - %</b>			
Excellent	73.5%	58%	
Good	26%	10.5%	
Fair	0%	26%	
Poor	0%	5%	

## [A Multicentre Study of Thromboprophylaxis in Pregnancy.](#)

**MP Crowley, C Noone, JR Higgins, S O Shea**

Crowley et al describe a study in which the charts of 540 women across 16 hospitals. 73.9% were on the correct thromboprophylaxis but 49% were underdosed.

Figure 1 Flowchart looking at dosing of thromboprophylaxis based on weight as per RCOG guidelines.

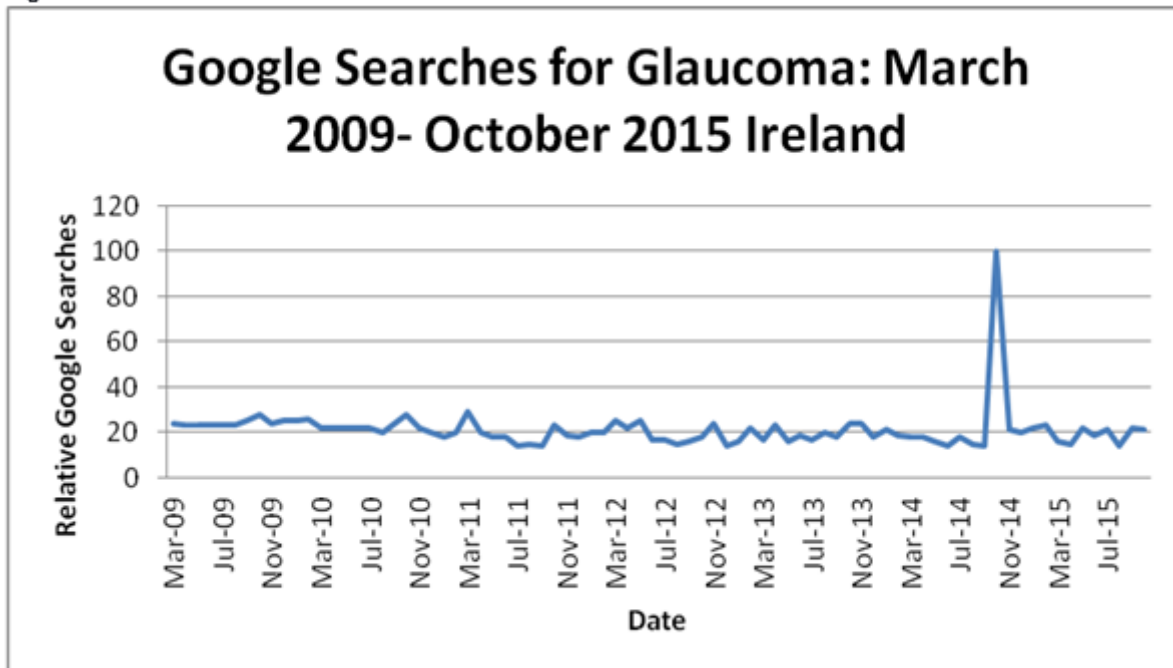


[I Still Haven't Found What I'm Looking For.... Bono, Google and Glaucoma Awareness.](#)

C Lyons, R Ellard, E McElnea, D Townley.

Lyons et al describe how there was a 5 fold increase in Google searches when Bono revealed that he had Glaucoma. This surge in public interest was far in excess of that generated by the 2014 Glaucoma Awareness week. The piece highlights the impact of celebrity disclosure.

Figure 1.



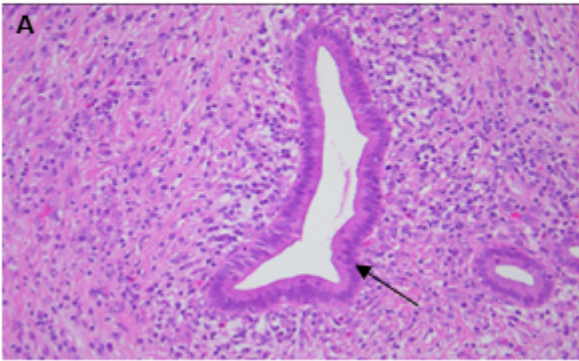
## Case Reports

### A Case of Autoimmune Pancreatitis Presenting as a Deterioration in Glycaemic Control in a Patient with Pre-Existing Type 2 Diabetes

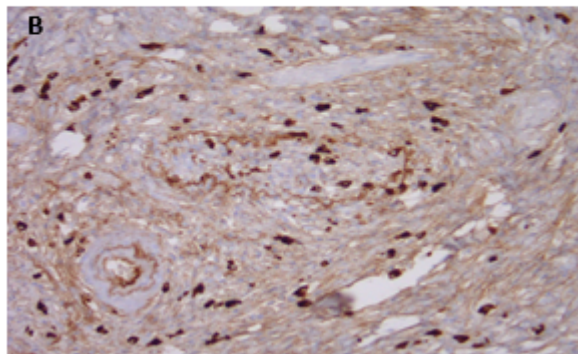
**Forde H, Slattery D, Swan N., Smith D**

Forde et al report the development of autoimmune pancreatitis in a Diabetic type 2 patient with worsening hyperglycaemia.

**Image A: High power H&E (x400 magnification) shows a pancreatic duct surrounded by a dense plasma cell infiltrate (arrow) with background parenchyma replaced by storiform fibrosis and with complete absence of pancreatic acini.**



**Image B: IgG4 immunohistochemical stain (x400 magnification) shows increased number of IgG4-positive plasma cells and a vein infiltrated by IgG4-positive plasma cells, causing marked compression of the lumen (obliterative phlebitis).**



### Amniotic band syndrome with pseudoarthrosis of tibia and fibula: A case report

**A Ananthan, G Athalye Jape, J Du Plessis, P Annear, R Page, S Rao**

Ananthan et al describe a case of amniotic band syndrome (ABS) in a 29 week gestation infant. There was a deficiency of the mid to distal tibia and fibula with pseudoarthrosis. Following excision of the constricting band there was considerable improvement in bone growth.



Figure 2: pseudoarthrosis of tibia and fibula of left leg with swollen foot



## Short Report

### [Life After the Event: A Review of Basic Life Support Training for Parents Following Apparent Life-Threatening Events and Their Experience and Practices Following Discharge](#)

Macken WL, Clarke N, Nadeem M, Coghlan D

## Occasional Piece

### [Adult attention deficit hyperactivity disorder and driving - risk, medication and fitness to drive](#)

K-F K Suen, D O'Neill

## Letters to the Editor

### [Immigrant health: laboratory reference ranges may differ from indigenous population's with potential for misinterpretation](#)

G Masukume

### [A retrospective review of the management of patients with hidradenitis suppurativa in the Belfast health and social care trust, Northern Ireland](#)

**W Abdelrahman, R Dawson, C McCourt**

**[World-class healthcare - the children of Ireland deserve no less](#)**

**P Greally, S Walsh, C Martin, A Foran, O Smith, S Sheehan, E Curtis, A Nicholson,**