

COMMENTARY

PANDEMIC FATIGUE90

[\[Read Article\]](#)

EDITORIALS

NO HEALTH WITHOUT MENTAL HEALTH: RISKS AND BENEFITS OF SCHOOL CLOSURES DURING A PANDEMIC91

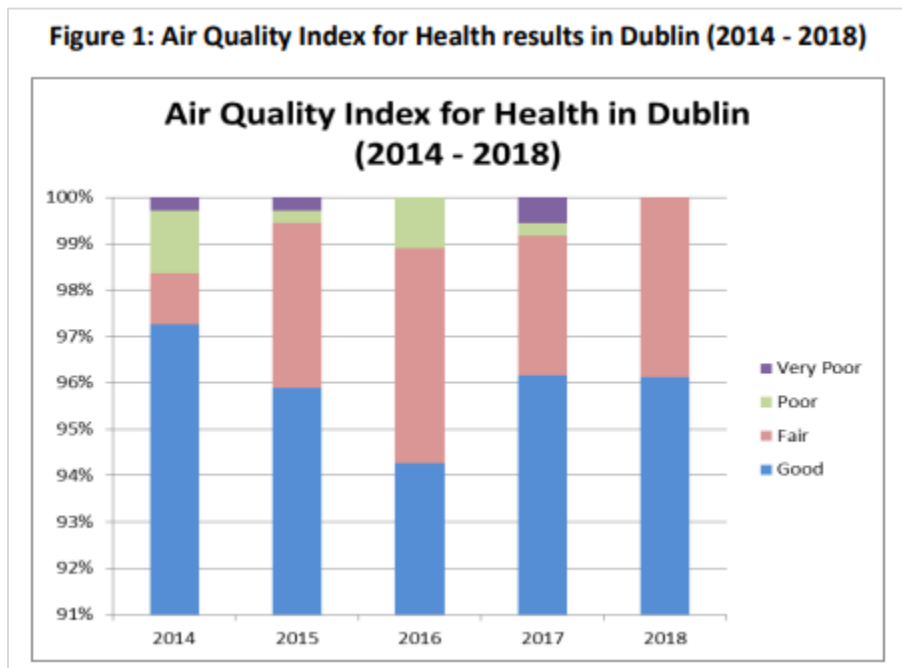
[\[Read Article\]](#)

ORIGINAL PAPERS

AIR QUALITY AND ITS ASSOCIATION WITH CARDIOVASCULAR AND RESPIRATORY HOSPITAL ADMISSIONS92

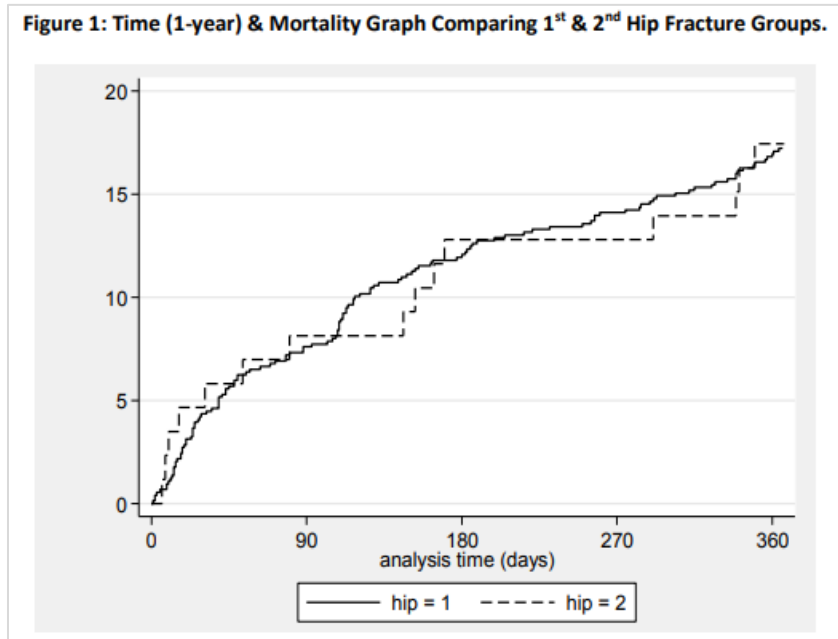
Quintyne et al found that the air quality index for health (AQIH) was as follows - good 96%, fair 3%, poor 1%. Changes in AQIH were associated with rises in asthma, chronic obstructive airway disease, and heart failure.

[\[Read Article\]](#)



Downey et al found that second hip fractures accounted for 10.5% of all hip fractures. Fifty per cent took place within 3 years of the first fracture.

[\[Read Article\]](#)



Ryan et al report that in 2014/15, head injury was diagnosed in 13,392 children. Falls were the main injury. The admission rate was 10.8% and neuroimaging was performed in 4.3% of cases.

[\[Read Article\]](#)

Table 2: Demographics, Arrival and treatment pathway of TBI presentations.

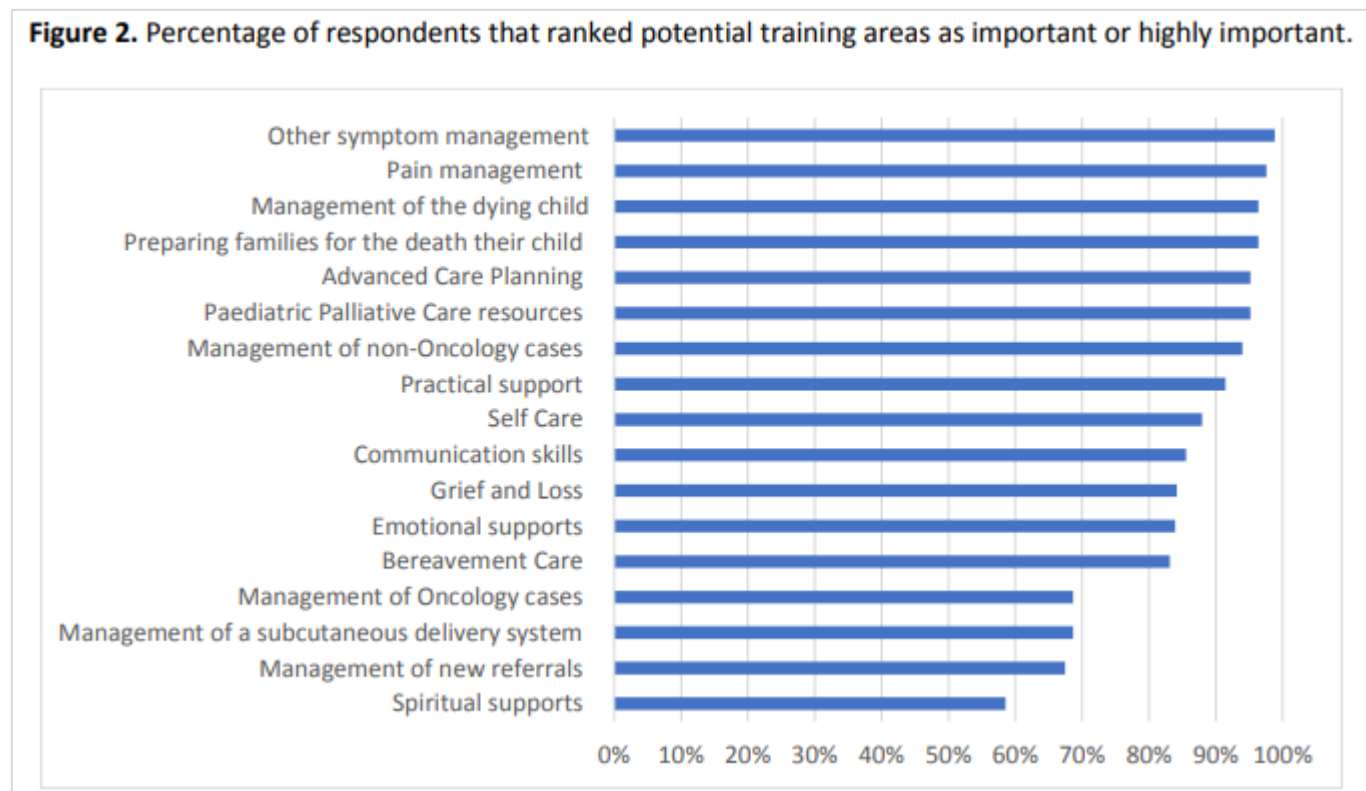
	<i>Infant (< 1 y)</i>	<i>Preschool (1-4y)</i>	<i>Primary School (5-12y)</i>	<i>Adolescent (12-16y)</i>	<i>All</i>
<i>Presentations</i>	1707 (12.7%)	6022 (45%)	3674 (27.4%)	1989 (14.9%)	13392
<i>Male sex</i>	870 (51%)	3543 (58.8%)	2481 (67.5%)	1448 (72.8%)	8342 (62.3%)
<i>Arrival by Ambulance*</i>	98 (10.4%)	336 (10.8%)	249 (12.2%)	210 (17.7%)	893(12.3%)
<i>GP Referral source *</i>	112 (11.8%)	431 (13.9%)	332 (16.2%)	272 (22.9%)	1147 (15.9%)
<i>Triage Category</i>					
1	2 (0.1%)	17 (0.3%)	11 (0.3%)	10 (0.5%)	40 (0.3%)
2	273 (15.9%)	835 (13.9%)	672 (18.3%)	472 (23.7%)	2252 (16.8%)
3	961 (56.3%)	1551 (25.8%)	1096 (29.8%)	762 (38.3%)	4370 (32.6%)
4 or 5	471 (27.6%)	3614 (60%)	1890 (51.4%)	743 (37.4%)	6718 (50.1%)
<i>Time in dept: h</i>	3.99	3.33	3.46	3.7	3.5 (+/-2.5)
<i>Admitted to ward</i>	396 (22.3%)	350 (5.2%)	342 (7.2%)	196 (8.35%)	1123 (8.4%)
<i>Admitted ICU</i>	1 (0%)	3 (0%)	4 (0.1%)	0	8 (0.1%)
<i>T/F to Neurosurgery</i>	13 (0.8%)	36 (0.6%)	74 (2%)	30 (1.5%)	153 (1.1%)
<i>Discharged home</i>	1300 (76.2%)	5630 (93.5%)	3285 (89.4%)	1715 (86.2%)	11930(89.1%)
<i>Died</i>	0	0	0	1	1
<i>OPD/ Review</i>	8 (0.5%)	33 (0.6%)	34 (0.9%)	61 (3%)	136 (0.3%)
<i>Neuroimaging</i>	40 (2.3%)	151 (2.5%)	203 (5.5%)	176 (8.8%)	570 (4.3%)
<i>Re-presented</i>	31 (%)	119 (2%)	111 (3%)	130 (6.5%)	391 (2.9%)

**Data taken from only two centres. % expressed over denominator of total presentations to these two hospitals. ICU; intensive care unit, OPD; out-patients department.*

CHILDREN'S PALLIATIVE CARE; THE IDENTIFIED LEARNING NEEDS OF PAEDIATRICIANS95

Whitla et al surveyed 114 paediatricians about training in palliative care for children. The items that they required further knowledge about included pain management, management of the dying child, palliative care resources and communication skills.

[\[Read Article\]](#)



OCCASIONAL PIECES

THE LIFE EXPECTANCY OF A CHILD BORN IN IRELAND IN THE TWENTY-FIRST CENTURY96

[\[Read Article\]](#)

MANDATORY VACCINATION FOR IRELAND; AN INFORMED INTERVENTION OR A KNEE-JERK REACTION?97

[\[Read Article\]](#)

PLANNING FOR THE AFTERMATH OF THE COVID-19 PANDEMIC.....98

[\[Read Article\]](#)

PRACTICING THE ART OF MEDICINE IN A CHANGING WORLD.....99

[\[Read Article\]](#)

IMPACT AND MECHANISM OF COVID-19 ON MENTAL HEALTH AND WELLBEING.....100

[\[Read Article\]](#)

CASE REPORTS

DIAGNOSTIC LIMITATIONS IN CONGENITAL ZIKA VIRUS INFECTION.....101

Flanagan et al describe an infant with congenital zika virus infection. The striking clinical features were the microcephaly and the cutis gyrate.

[\[Read Article\]](#)

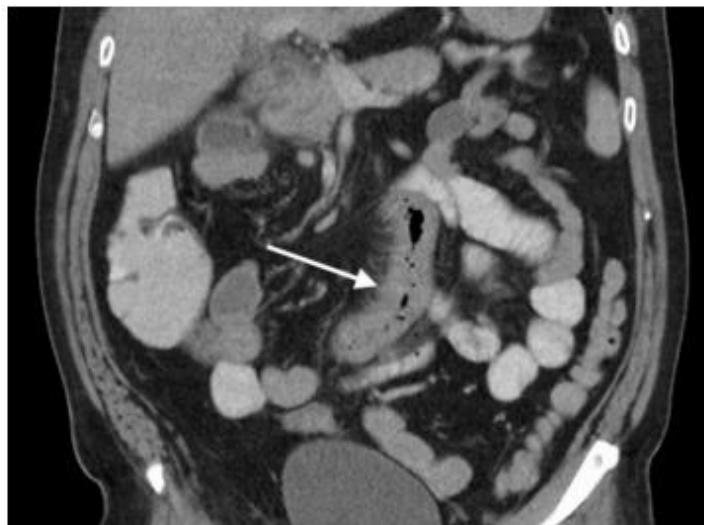


ENTERITIS AND SEVERE ABDOMINAL PAIN AS THE FIRST PRESENTATION OF COVID-19102

Keeler et al describe a patient whose initial presentation was with abdominal pain and diarrhoea. Subsequent chest imaging was suggestive of Covid-19 which was later confirmed.

[\[Read Article\]](#)

Image 1: Coronal image of the abdomen post IV and PO contrast administration demonstrating wall thickening at the level of duodenojejunal flexure and proximal jejunum (white arrow).



SHORT REPORTS

OUTCOMES POST THROMBOLYSIS FOR ACUTE PULMONARY EMBOLISM.....103

Danish et al report 25 patients who had thrombolysis therapy for pulmonary embolism. Four patients suffered complications due to the thrombolysis. The diffusing capacity was normal in all patients after therapy.

[\[Read Article\]](#)

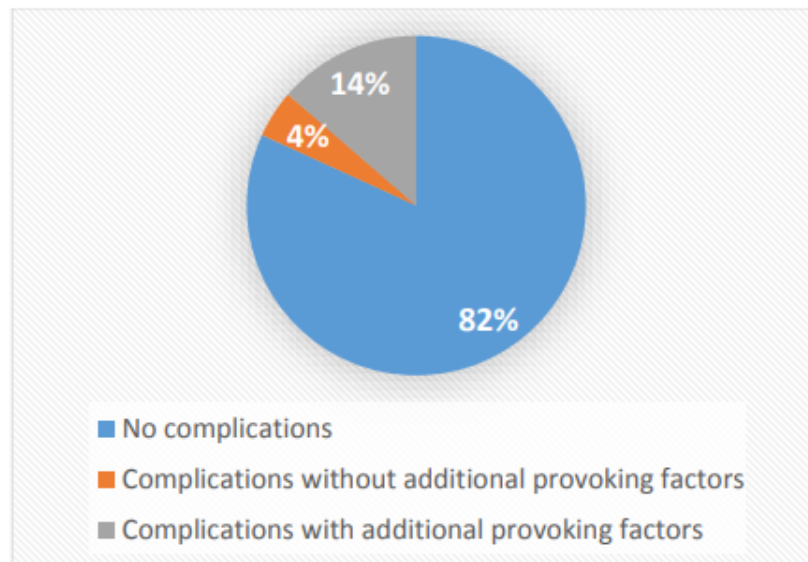


Figure 1. Complications Associated with thrombolysis. Four patients experienced complications, all of which comprised extracranial bleeding, 2 of these were minor.

BOOK REVIEWS

OPENING DUSTY BOXES: THE LIFE OF A COUNTY SURGEON IN EDWARDIAN IRELAND.....104

[\[Read Article\]](#)

LETTERS TO THE EDITOR

AMPLITUDE INTEGRATED ELECTROENCEPHALOGRAPHY (AEEG) EDUCATION.....105

[\[Read Article\]](#)

FRAILTY INDEX: A USEFUL STRATIFICATION FOR ELDERLY SURGICAL PATIENTS.....106

[\[Read Article\]](#)

XIA - GIBBS SYNDROME: A PSYCHIATRIC PERSPECTIVE.....107

[\[Read Article\]](#)

TACKLING STRESS AMONG HEALTHCARE WORKERS DURING THE COVID-19 PANDEMIC. ...108

[\[Read Article\]](#)

THE IMPACT OF COVID-19 ON MEDICAL STUDENT EDUCATION – NAVIGATING UNCHARTED TERRITORY109

[\[Read Article\]](#)

ARTICLE RESPONSE LETTERS

RESPONSE TO ARTICLES ON PSYCHOTROPIC DRUGS, MENTAL HEALTH AND DRIVING FROM:
L. ROCHE ET AL110

[\[Read Article\]](#)

RESPONSE TO ARTICLE ENTITLED: “SKIN CANCER EXCISION IS MORE EFFICIENT AND COST EFFECTIVE IN A SPECIALIST SECONDARY CARE SERVICE” BY S. O’SULLIVAN ET AL - ISSUE: IR MED J; VOL 113; NO. 3; P38 FROM: D. BRENNAN.....111

[\[Read Article\]](#)

RESPONSE TO ARTICLE ENTITLED: “SKIN CANCER EXCISION IS MORE EFFICIENT AND COST EFFECTIVE IN A SPECIALIST SECONDARY CARE SERVICE” BY S. O’SULLIVAN ET AL - ISSUE: IR MED J; VOL 113; NO. 3; P38 FROM: N. MAGUIRE ET AL.....112

[\[Read Article\]](#)

RESPONSE TO ARTICLE ENTITLED: “VITAMIN D AND INFLAMMATION - POTENTIAL IMPLICATIONS FOR SEVERITY OF COVID-19” BY E. LAIRD ET AL - IR MED J; VOL 113; NO. 5; P81 FROM: I. ZAPATA.....113

[\[Read Article\]](#)

AUTHORS LAIRD ET AL COMMENT ON LETTER IN RESPONSE TO THEIR ARTICLE “VITAMIN D AND INFLAMMATION - POTENTIAL IMPLICATIONS FOR SEVERITY OF COVID-19”.....114

[\[Read Article\]](#)

CONTINUAL PROFESSIONAL DEVELOPMENT

IMO Members can take our CPD Quiz to earn CPD/CME points.

[CPD QUIZ](#)

THE IRISH MEDICAL JOURNAL MAILING LIST

Subscribe below to receive the Irish Medical Journal newsletter.

(There are 10 newsletters sent each year with new research updates.)

[SUBSCRIBE](#)