

IMJ Commentary

Towards A High Integrity Health System

J FA Murphy - Editor (P541)

Original Papers

Incidence of hospital acquired thrombosis (HAT) in a tertiary care hospital

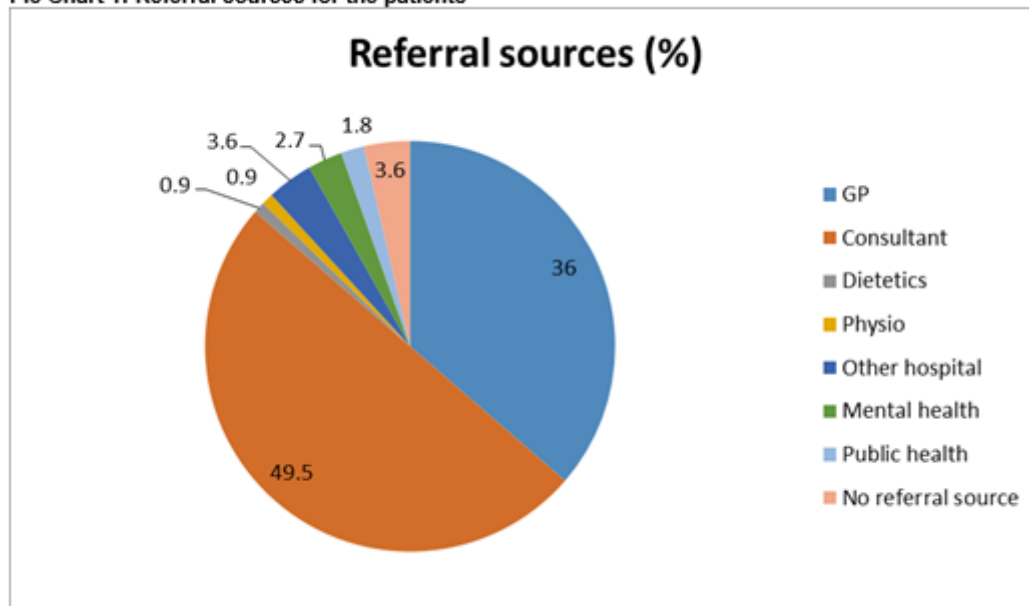
Khan et al in their study found that acute venous thrombosis (VTE) was diagnosed in 100 patients and hospital acquired thrombosis (HAT) in 48 patients. The authors stress the importance of a hospital thromboprophylaxis policy. (P542)

No. of Risk Factors	No. of Patients
1	3
2	7
3	3
4	4

Caring for obese children- a change in paradigm

Doyle et al report on the role of a hospital programme for overweight children. The study included 111 children. A high incidence of emotional difficulties was encountered among the children. Learning difficulties was another feature. (P543)

Pie Chart 1: Referral sources for the patients



[Ireland's recent contribution to the radiological literature: a bibliometric analysis](#)

Redmond et al report on the published papers produced by Irish radiology departments since 2000. There were 781 papers. Only 9.6% of papers were a collaborative effort with more than one hospital department (P544)

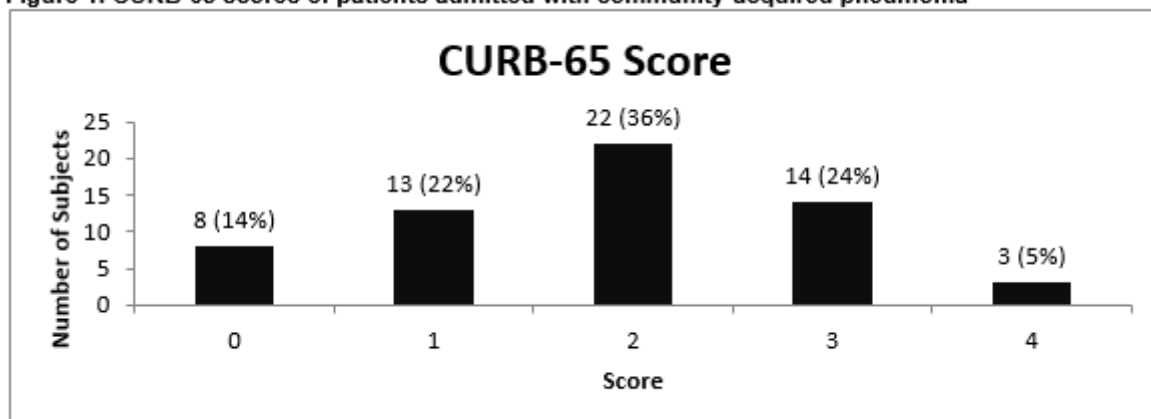
Table 2. The top 10 most cited articles during the study period.

	Title	First author	Year	Journal	No. of citations
1	Contrast-induced nephropathy ¹³ .	Gleeson	2004	American Journal of Roentgenology	175
2	Transitional cell carcinoma of the upper urinary tract: spectrum of imaging findings ¹⁴ .	Browne	2005	Radiographics	82
3	Extended interval for retrieval of Günther Tulip filters ¹⁵ .	Terhaar	2004	Journal of Vascular and Interventional Radiology	76
4	Diagnostic accuracy of magnetic resonance cholangiopancreatography and ultrasound compared with direct cholangiography in the detection of choledocholithiasis ¹⁶ .	Varghes e	2000	Clinical Radiology	75
5	Current trends in treatment of osteoid osteoma with an emphasis on radiofrequency ablation ¹⁷ .	Cantwell	2004	European Radiology	75
6	Prevalence and significance of asymptomatic venous thromboembolic disease found on oncologic staging CT ¹⁸ .	Cronin	2007	American Journal of Roentgenology	73
7	Dose reduction in paediatric MDCT: general principles ¹⁹ .	Paterson	2007	Clinical Radiology	69
8	Amyotrophic lateral sclerosis: enteral nutrition provision--endoscopic or radiologic gastrostomy ^{20?}	Thornton	2002	Radiology	64
9	Whole-Body MRI versus PET in assessment of multiple myeloma disease activity ²¹ .	Shortt	2009	American Journal of Roentgenology	63
10	Gunther Tulip retrievable inferior vena caval filters: indications, efficacy, retrieval, and complications ²² .	Looby	2007	Cardiovascular and Interventional Radiology	62

[An audit of empiric antibiotic choice in the inpatient management of community-acquired pneumonia](#)

Delaney and Jackson studied 60 patients with community acquired pneumonia. They were assessed using the CURB score. At least one third of patients had a CURB score 0-1 which suggests that they could have been managed as an outpatient. (P545)

Figure 1. CURB-65 scores of patients admitted with community-acquired pneumonia



[Rotavirus Gastroenteritis is Associated with Increased Morbidity and Mortality in Children with Inherited Metabolic Disorders](#)

A Smith, M Mannion, P O'Reilly, E Crushell, J Hughes, I Knerr, P Gavin, A Monavari (P546)

[Hospital acquired thrombosis \(HAT\) prevention in an acute hospital: a single centre cross-sectional study](#)

Khan et al audited the proportion of patients with a VTE risk who received thromboprophylaxis (TP). TP was prescribed to 43% of these patients. Following the introduction of an assessment tool the TP prescription was 46.3%. (P547)

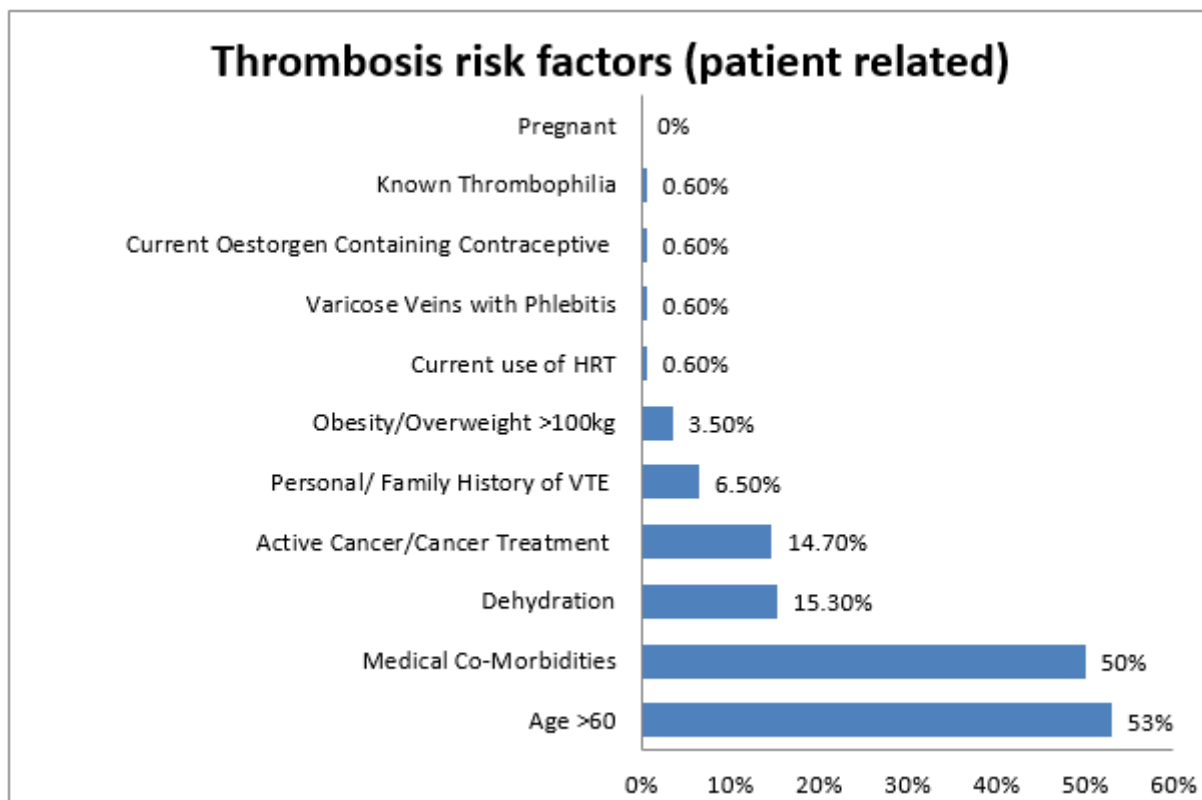


Figure 1: Patient related risk factors

[Barriers to dental attendance in older patients](#)

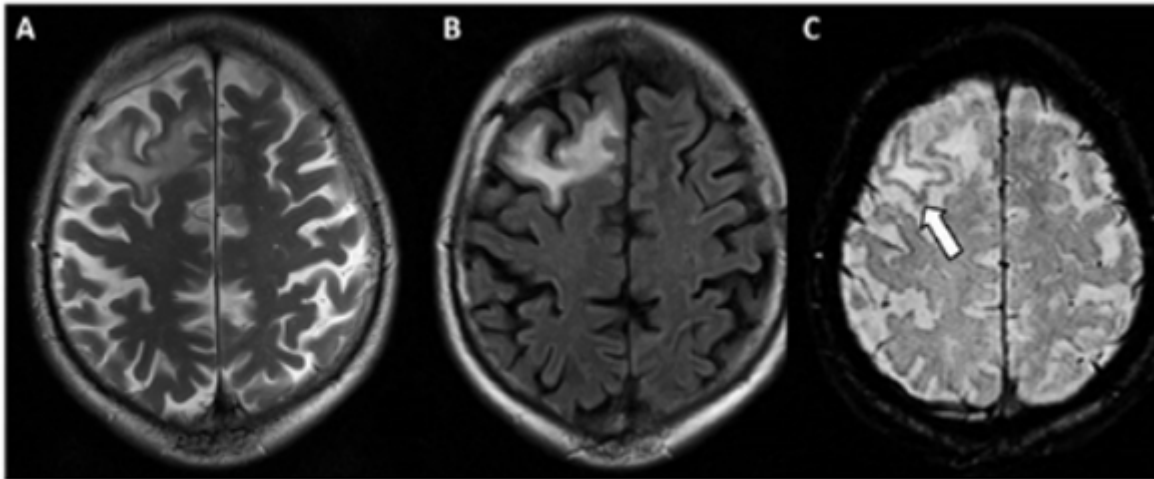
[Shanahan and O'Neill assessed the standard of dental care in older patients with a mean age of 79.6 years. Over 50% of the patients had not attended a dentist in the preceding 36 months. The authors point that regular dental checks are important for the detection of oral pathology as well as dental care. \(P548\)](#)

Case Reports

A role for susceptibility weighted imaging in progressive multifocal leukoencephalopathy

Yap et al report on the MRI findings in 2 cases of progressive multifocal leukoencephalopathy. The specific finding was the hypodense signal of subcortical u-fibres on susceptibility weighted sequence. (P549)

Patient 1



MRI of the brain (axial view) showing hyperintense signal in the right frontoparietal white matter on the T2-weighted (A) and fluid attenuated recovery (B) sequences, and corresponding serpiginous hypointense signal in the subcortical U-fibers on susceptibility-weighted imaging (white arrow)

Post traumatic tension pneumocephalus: the Mount Fuji sign

Ryan et al describe a case of complex facial bone fractures and a pneumocephalus following an assault. The pneumocephalus, which is illustrated on the skull x-ray, is called the Mount Fuji sign. (P550)



[The Bingo card sign as an early symptom of Alzheimer's disease](#)

Hawco and Weaver that the loss of the capacity to play bingo may be an early marker for the onset of Alzheimer's disease. The game requires number recognition, letter recognition, short-term memory, and concentration (P551)

Short Report

Potential impact of cycle of care on Diabetes services in secondary care

Finnegan et al describe the programme 'Diabetes cycle of care' through which 25% of Diabetic patients attending OPD could be managed in primary care. The plan is bi-annual structured Diabetes review through primary care services for type 2 Diabetes patients with stable glycaemic control. (P552)

	TYPE I	TYPE II			
		All Patients	Insulin	OHA	Diet controlled
Number	164	301	62	221	18
Age (years)	45.1(13.6)	62.9(13.7)	64.6(13.6)	62.2(12.9)	64.5(19.5)
Average HbA1c mmol/mol	62.7 (17)	56.1(18)	64.3(19)	54.8(17)	43.6(14)
HbA1c ≤58 mmol/mol	42.4%	69.1%	51.6%	71.9%	94.4%
Total Cholesterol mmol/l	4.4(0.8)	4.1(1.0)	4.0(1.1)	4.1(1.0)	4.1(1.1)
LDL Cholesterol mmol/l	2.4(0.7)	2.2(0.8)	2.1(0.8)	2.2(0.8)	2.3(1.0)
Total Cholesterol < 5 mmol/l	65.9%	72.8%	69.4%	73.3%	77.7%
On Statins	43.9%	71.4%	69.4%	72.9%	61.1%
eGFR >60	132	203	30	161	12
eGFR 30-60	12	71	19	48	4
eGFR 15-30	4	16	6	8	2
eGFR <15	0	4	3	1	0
eGFR Unknown	16	7	4	3	0
On ACE/ARB %	32.3%	65.1%	62.9%	72.9%	50%

Data are presented as a mean with standard deviation in brackets, percentage

Occasional Piece

Establishing a mentoring system for anaesthetic trainees.

A Quinn, D Moore. (P553)

Letters to the Editor

Books to Blogs - The Top Layer Of FOAM

A M Imtiaz, J Ryan (P554)

A breathtakingly rare presentation of pyloric stenosis

S A Hurley, F McCartan, N McGrath, A Mortell, MJ O'Grady (P555)

A Turn for the Worse

J Hayden , M Crealey B O' Connor, A Mortell, E Ryan (P556)

Cancer Care Costs and Clinical Trials

D Kelly, C Brady, J Sui, E, Cronin, D O'Hare, J Waldron, D O Mahony , D Power, RM Bambury, S O'Reilly